



100 YEARS OF THE MINISTRY  
OF SOCIAL AFFAIRS AND HEALTH

---

**100 years**  
***of Finnish social and health policy***  
**1917–2017**

# 1910s

From poor relief to  
central government



Poor relief Temperance work  
**Elimination of poverty**  
Employee protection  
Mental treatment

## 1917

*An independent Social  
Administrative Department  
is established.*

## 1918

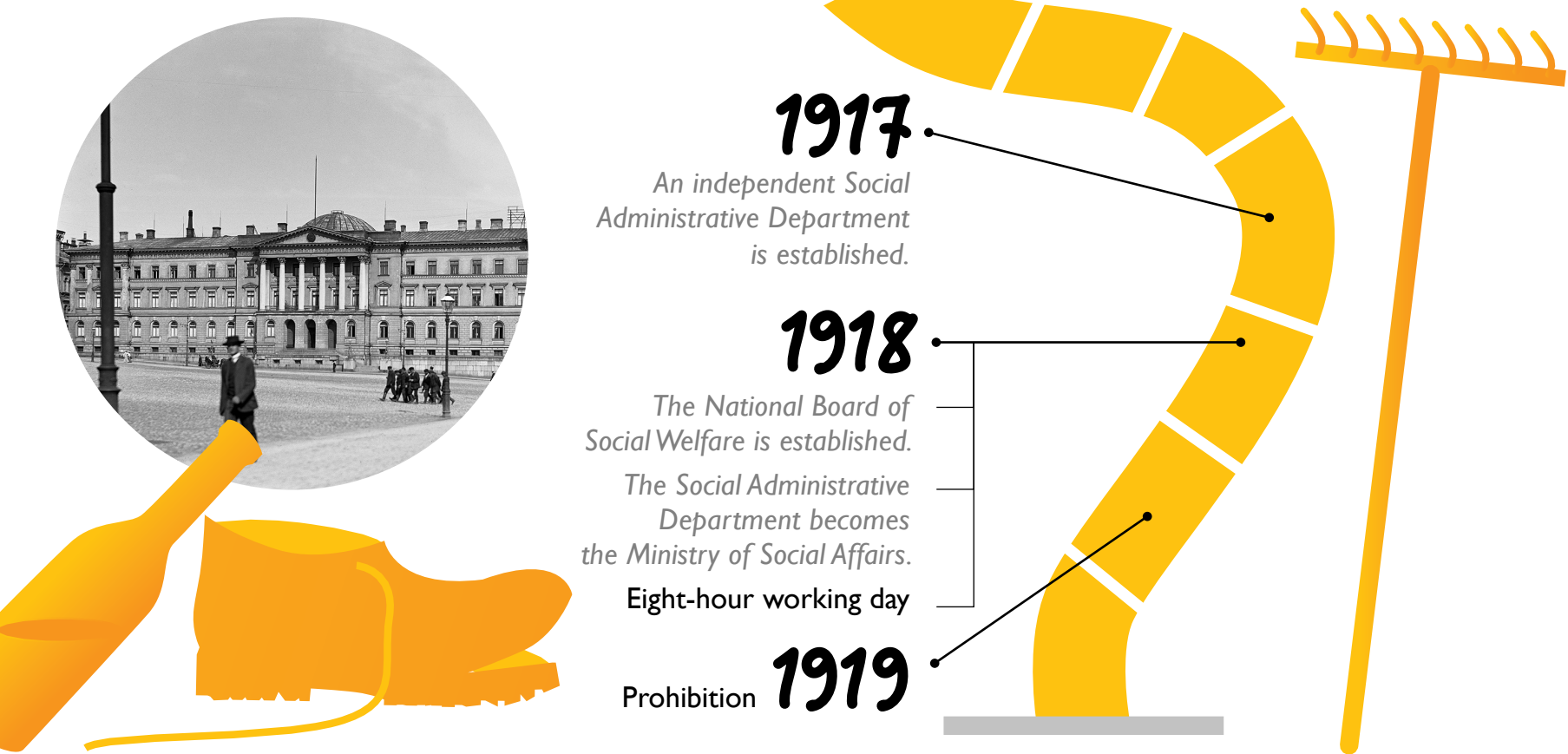
*The National Board of  
Social Welfare is established.*

*The Social Administrative  
Department becomes  
the Ministry of Social Affairs.*

**Eight-hour working day**

## 1919

**Prohibition**



# 1920s

## Serving the poor and working people

Child welfare

**Social conditions of workers**

Old people's homes National Board of Health

Care of lunatics



## 1922

*Ministry of Social Affairs  
in charge of all social  
administration.*

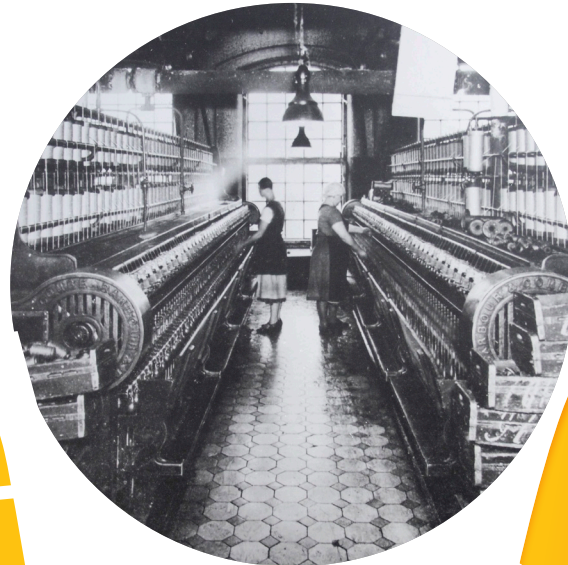
Prohibition tightens

Poor Relief Act

Employment Contracts  
Act

## 1925

Statutory motor  
liability insurance



# 1930s

**Social insurance  
system gives security**

---

National pension

Workhouses

**Depression**

Vagabonds Social work

Beggars

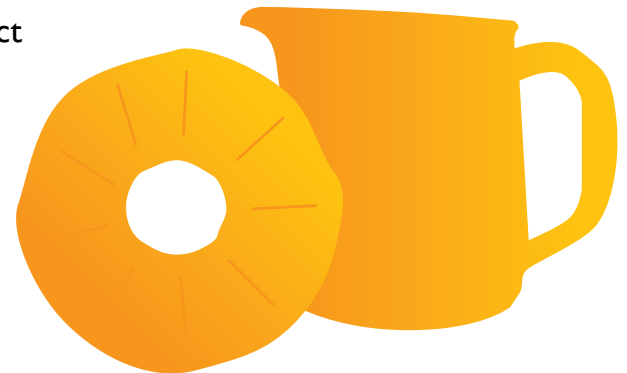


## 1936

Child Welfare Act

Act on Alcoholics

Vagrancy Act



# 1940s

**From wartime  
to reconstruction**

Maternity and child health clinics

*War reparations* Care of disabled people

**Child allowance** **Maternity packs**

*Act on Tuberculosis* *Care of disabled war veterans*

Baby-boom generation



## 1949

Maternity Allowance Act

## 1948

Military Injuries Act

Child benefit is introduced

Act on Tuberculosis

Occupational accident  
insurance for all wage earners

# 1950s

## Construction of the welfare state begins

---

Municipal social welfare services  
**Hospitals**

*Temperance writing competitions*  
Municipal medical officers  
*Act on Mental Disease*

Occupational Safety  
and Health Act

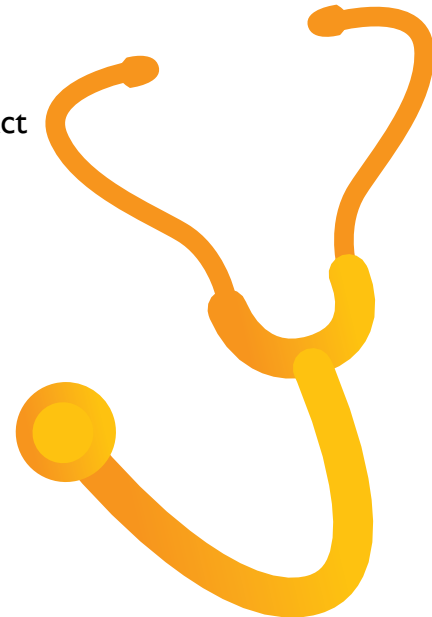
## 1958

## 1956

National pension system reform,  
equalisation system

## 1957

Social Allowance Act



# 1960s

## Welfare state becomes established

---

Earnings-related pension system

Dental care

**Health insurance**

*Act on General Municipal Hospitals*

Social welfare and healthcare

National Board of Social Welfare

## 1962

Earnings-related pension acts  
enter into force

## 1963

National Health Insurance Act



## 1968

*The Ministry renamed as  
Ministry of Social Affairs  
and Health. Research de-  
partment established, heal-  
thcare under the Ministry's  
remit*

TEL

TEL



# 1970s

**Stronger municipal social welfare and healthcare**

---

Occupational healthcare  
**Health centres** *Primary healthcare*  
**Child day care** Health education



## 1972

Primary Health Care Act:  
first health centres,  
improved dental care

## 1976

Tobacco Act





# 1980s

## Decade of growth

---

Social Welfare Act  
**Services Planning**  
**Child maintenance**  
Elderly care Home services  
Ombudsman for Equality  
*Reform of the central  
government grants system*

## 1982

Social Welfare Act



## 1987

Gender  
Equality Act



# 1990s

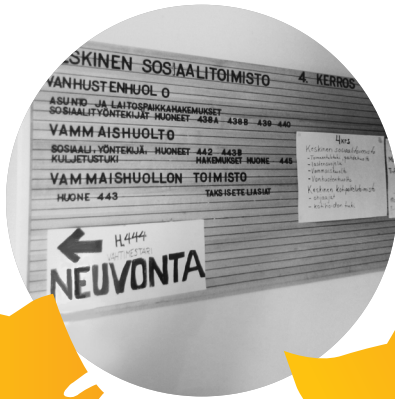
**Recession and internationalisation**

**Depression** Unemployment  
Preparations for demographic changes

**Social exclusion**

Developments in social welfare  
and healthcare

*Social security cuts and reforms*



## 1991

Rehabilitation legislation:  
more versatile  
rehabilitation



## 1995

Consolidation of  
national and EU health  
and social policies



# 2000s

Time of demographic change

**Pension reform** Prevention  
**Restructuring of municipalities and services** Social exclusion

*Food safety Health promotion*  
National development of social welfare and healthcare



## 2005

Maximum waiting times are introduced

Earnings-related pension reform continues



# 2010s

## Decade of the health and social services reform

Need for savings and cuts  
**Health and social services reform**  
Migration  
**Structural changes**  
Client-orientation  
*Active inclusion*

### 2017

Earnings-related pension reform enters into force gradually

8 Nov 2017  
*Ministry will celebrate its 100th anniversary*

### 2019

Health and social services reform will enter into force



# Future. Now!

---

## Transformation of work

*Migration Health technology*

*AI Genome Centre*

*New challenges and possibilities*

**Digitalisation**

Robotics

