



SUOMI
FINLAND

EQUAL HEALTH

June 2020

ThisisFINLAND Social Media Campaign

#EqualHealth



DAY 1

SUOMI
FINLAND

 **thisisFINLAND** - things you should and shouldn't know - ...
This is Finland ✓
Published by Sanni Honkavaara [?] · June 24 at 9:30 AM · 🌐

In addition to healthy nutrition and clean water, vaccinations are the most important element affecting health worldwide!

In Finland, vaccinations against 11 diseases are available to all children. The national vaccination programme is one of the most comprehensive in the world.

It is developed and monitored by the Finnish Institute for Health and Welfare (THL).

<https://bit.ly/2ADMrrmt>



THL.FI
Vaccines A to Z - Infectious diseases and vaccinations - THL [Learn More](#)

[SEE ON FACEBOOK](#)

 **thisisFINLAND** ✓
[@thisisFINLAND](#) ⌵

Food, clean water and vaccinations are the most important elements affecting health!

In [#Finland](#), vaccinations against 11 diseases are available to all children. The vaccination programme is among the largest in the world. [@THLorg](#)

[#EqualHealth](#)



Vaccines A to Z - Infectious diseases and vaccinations - THL
[thl.fi](#)

[SEE ON TWITTER](#)



DAY 2

SUOMI
FINLAND



thisisFINLAND - things you should and shouldn't know -
This is Finland

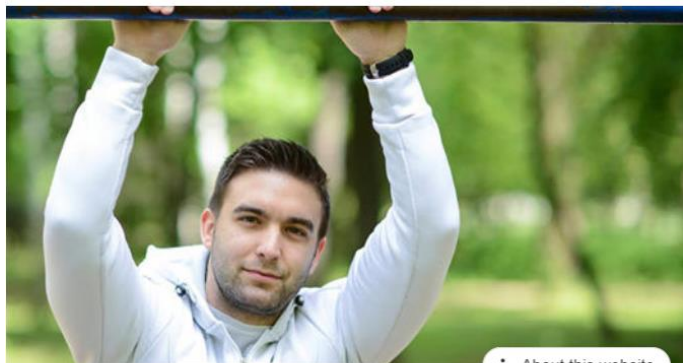


Published by Sanni Honkavaara [?] · June 25 at 9:30 AM ·

Many factors affect the health of asylum seekers, whether in their country of origin, during their journey, or at the reception centre. The Finnish Institute for Health and Welfare (THL) has developed a new health examination protocol for asylum seekers in Finland.

The new model helps identify factors in asylum seekers' health and wellbeing that could place them in a vulnerable position.

Read more: <https://bit.ly/3hzsL3p>



About this website

THL.FI

The initial health examination for asylum seekers has been revised – the new operating...

Learn More

[SEE ON FACEBOOK](#)



thisisFINLAND
@thisisFINLAND



#Finnish @THLorg has developed a new health examination protocol for asylum seekers in #Finland.

The new model helps identify factors in asylum seekers' health and wellbeing that could place them in a vulnerable position.

#EqualHealth






The initial health examination for asylum seekers has been revised – the new operating model will...
thl.fi

[SEE ON TWITTER](#)



DAY 3

SUOMI
FINLAND

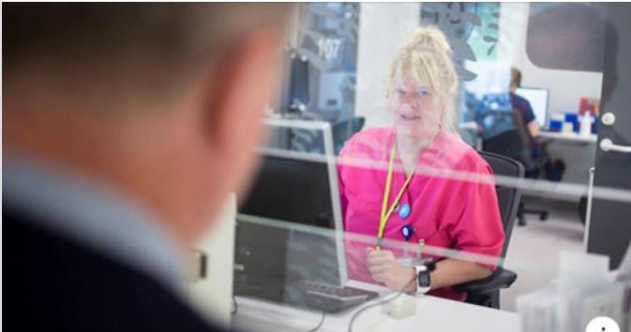
 **thisisFINLAND - things you should and shouldn't know - This is Finland** 
Published by Sanni Honkavaara [?] · June 26 at 9:30 AM · 


The Finnish Institute for Health and Welfare (THL) studies the far-reaching impacts of the corona epidemic and related restrictions on health, wellbeing, the economy, and social and healthcare services.

Vulnerable members of the population must receive support, the researchers stress.

The preliminary assessment was published at the end of April and new results are reported weekly.

Read more: <https://bit.ly/2Yd3yo4>




THL FI 

Far-reaching impacts of the COVID-19 epidemic on people's well-being and social and health...

[Learn More](#)

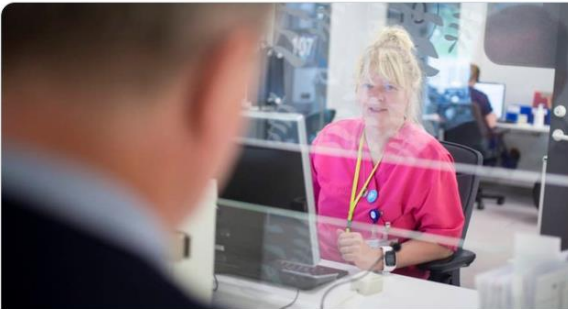
[SEE ON FACEBOOK](#)

 **thisisFINLAND** 
[@thisisFINLAND](#)

#Finnish @THLresearch studies the far-reaching impacts of the corona epidemic on health and wellbeing, and on the use of social and healthcare services.

Vulnerable members of the population must receive support, the researchers stress.

#EqualHealth



Far-reaching impacts of the COVID-19 epidemic on people's well-being and social and health care... [thl.fi](#)

[SEE ON TWITTER](#)



DAY 4

SUOMI
FINLAND



thisisFINLAND - things you should and shouldn't know - This is Finland

Published by Sanni Honkavaara [?] · June 27 at 9:30 AM

The Genomics to Healthcare initiative, coordinated by the Finnish Institute for Health and Welfare (THL), aims to prepare the Finnish healthcare system for the clinical utilisation of genetic risk information.

This initiative will create vast opportunities for personalised, preventive public healthcare.

Read more: <https://bit.ly/2YDsdkG>

Genomics to healthcare **thl**

From Big Data to meaningful small data

We will combine genomic data with health data to create a platform for evaluating the individual risks of major common diseases.

This will create opportunities for prevention and personalised healthcare.

Source: THL, 2020

[SEE ON FACEBOOK](#)



thisisFINLAND
@thisisFINLAND

Genomics to Healthcare by @THLresearch aims to prepare the #Finnish healthcare system for the clinical utilisation of genetic risk information.

This will create vast opportunities for personalised, preventive public healthcare.

[#EqualHealth](#)

bit.ly/2YDsdkG

Genomics to healthcare **thl**

From Big Data to meaningful small data

We will combine genomic data with health data to create a platform for evaluating the individual risks of major common diseases.

This will create opportunities for prevention and personalised healthcare.

Source: THL, 2020

[SEE ON TWITTER](#)